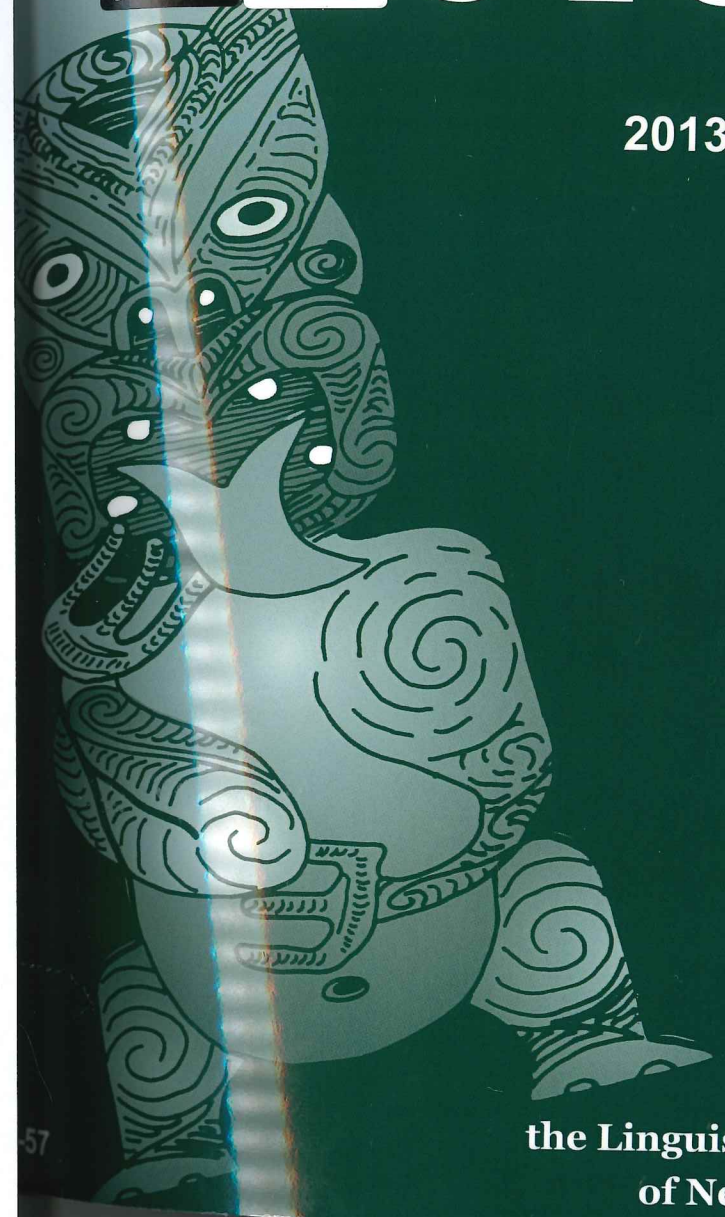


405 Reo
Manawatu NZ Collection
(Level 2)
Massey University Library
Received on: 03-05-16
56/57
* b



te reo

2013 / 2014



Journal of
the Linguistic Society
of New Zealand

Te Reo

Editor: Kevin Watson: *Department of Linguistics,
University of Canterbury (Private Bag 4800, Christchurch 8140, NZ.)*
<kevin.watson@canterbury.ac.nz>

Editorial Board

Laurie Bauer (Wellington, NZ), Kate Burridge (Melbourne, Australia), Andrew Carstairs-McCarthy (Christchurch, NZ), Jenny Cheshire (London, UK), Janet Fletcher (Melbourne, Australia), Ray Harlow (Hamilton, NZ), Janet Holmes (Wellington, NZ), Frank Lichtenberk (Auckland, NZ), Diane Massam (Toronto, Canada), Miriam Meyerhoff (Auckland, NZ), Jim Miller (Edinburgh, Scotland), Jeff Siegel (Armida, Australia and Hawai'i, USA), Paul Warren (Wellington, NZ), Cynthia White (Palmerston North, NZ).

Te Reo is published annually by the Linguistic Society of New Zealand (Inc.). Subscriptions, which include postage at second class mail rates, are not sold separately from membership. Write to the NZLS Treasurer, c/o *School of Linguistics and Applied Language Studies, Victoria University of Wellington, PO Box 600, Wellington 6140, New Zealand*. Rates are:

	INDIVIDUAL MEMBERSHIP & BOOKSHOPS	INSTITUTIONAL MEMBERSHIP	UNWAGED MEMBERSHIP (NZ ONLY)	5-YEAR MEMBERSHIP	10-YEAR MEMBERSHIP
New Zealand (incl. GST)	\$NZ20	\$NZ30	\$NZ5	\$NZ80	\$NZ150
Foreign	\$NZ25	\$NZ35	—	\$NZ100	\$NZ190

In the publication of articles or monographs preference will be given to mss. submitted by members, but non-members are also welcome to submit mss. Submissions should be made on-line through <http://www.nzlingsoc.org/ojs/index.php/TeReo>. Details of the preferred form for submissions are provided on the *Te Reo* webpage at <http://www.nzlingsoc.org/teReo>.

TE REO

Journal of the Linguistic Society of New Zealand

Volumes 56 and 57

2013–2014

Contents

- Regularities in Irregularities in English Inflection
(Laurie Bauer) 3
- English-origin discourse markers in New Zealand Serbian
(Ksenija Mincic Obradovic) 13
- Deficiency in Māori phrases
(Elizabeth Pearce) 35
- The English spoken by Māori: changes in rhythm over time
(Blanca Vowell, Margaret MacLagan and Jeanette King) 63
- NARRATIVE: STATE OF THE ART IN AOTEAROA**
Section Editor: Farzana Gounder, University of Waikato
- Narrative perceptions and perceptions of narrative
(Farzana Gounder) 93
- Locating research methods within an applied linguistics narrative
framework
(Gary Barkhuizen, Takaaki Hiratsuka, Aziz Khan and
Jenny Mendifeta) 109
- Southern Celts: Narrative as Method and Text
(Celine Kearney) 127

Story sharing in narrative research
(Jinah Lee, Judith Hunter, Margaret F)

Narrative construction of the self
(David Lumsden)

Norfolk Pitcairn Bounty: Myth narrative
(Joshua Nash)

Talanoa: Differentiating the Talanoa R
from Phenomenology, Narrative, Kaup
Feminist Methodologies
(Timote Vaoleti)

Editor's Noticeboard